



# Ride® Forward™ Cushion

For support, comfort and protection



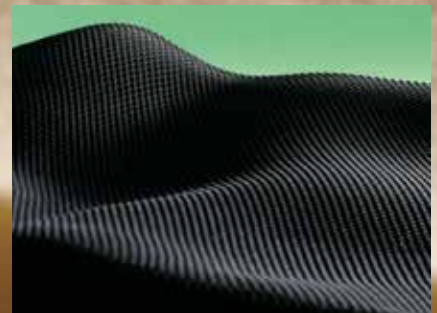
**Now in even more sizes...  
Kids too!**

# It's all about contour...

Helps prevent sliding while providing superior support and protection.



## Ride Designs® Forward™ Cushion



### Support and protection

Ride's patented contoured base helps promote improved postural control and balance while helping to reduce pressure at bony prominences.

### Comfort

The top visco-elastic ("memory foam") layer conforms to the sitter's unique shape, making for a comfortable ride on the supportive contours of the base.

The cushion contour, spacer fabric outer cover and inner incontinent resistant cover all work together to keep the user and cushion dry.

**Cross section:  
Spacer fabric  
maintaining airspace,  
even under load**



▲ Spacer fabric in cover for breathability.

### Heat and moisture management

The viscoelastic layer conforms while the spacer fabric outer cover maintains air space between the sitter and cushion for a potentially cooler and dryer sitting experience.



▲ Inner incontinent resistant cover, protects the cushion.

# Don't let familiar materials lull you into thinking the Forward is just another foam cushion — it is not!

**Familiar materials, yes, but within a unique design that aids in consistent management of skin risk across a broad range of temperatures, while helping to manage heat and moisture. No other "foam" cushion can claim this.**

**Forward Cushion presents near constant performance across a broad range of temperatures.**

- Safe when cold
- Safe when warm

Competitive product performance is dramatically influenced by temperature. Other cushions:

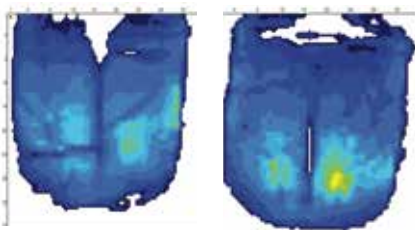
- Not safe when cold
- At risk of bottoming out when warm



## Ride Forward Cushion Research

A study has demonstrated the consistent performance of the Ride Forward Cushion across a wide range of temperatures, time and age. It illustrates how temperature can influence cushion performance.

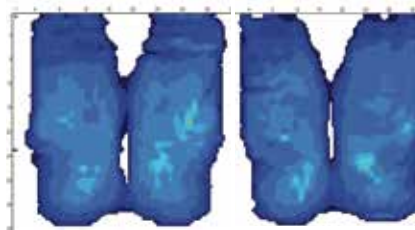
### Competitive Cushion



Start sitting      30 minutes later

After sitting for only 30 minutes, the competitor cushion's visco-elastic material displaces, causing the sitter to bottom out on the polyurethane foam base. This creates a potentially dangerous situation.

### Forward Cushion



Start sitting      30 minutes later

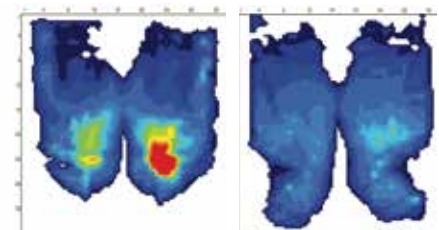
Performance on the Ride Forward Cushion is consistent at room temperature, and as it warms over the same 30 minutes.



### What pressure mapping reveals...

A pressure map (shown below) is a computerized tool for assessing pressure distribution. When a subject sits on a pressure mapping mat laid over a cushion, a computer screen displays a map of pressures. Typically, the hotter colors (the reds) indicate areas of higher pressures, and the cooler colors (the blues) indicate areas of lower pressures.

### Competitive vs Forward Cushion when cold (23°F)



Competitor      Forward Cushion

When frozen, the competitor cushion is hard and is not safe to sit on. The Ride Forward demonstrates potentially safer support when stiffened by freezing.

Detailed information on this study, "Ride Forward Cushion versus Visco-elastic Competitor," can be found at [www.ridedesigns.com/forward-cushion](http://www.ridedesigns.com/forward-cushion); click the Literature tab, then download the Forward Cushion Pressure Map Study.



## Forward Cushion Specifications

Cushion Size (width x depth)		Part Number	Fits Wheelchair Widths		Fits Wheelchair Depth	
Ⓟ 10 x 10"	25 x 25cm	FCD-1010	9/10"	23/25cm	9/10"	23/25cm
Ⓟ 10 x 12"	25 x 30cm	FCD-1012	9/10"	23/25cm	11/12"	28/30cm
Ⓟ 12 x 12"	30 x 30cm	FCD-1212	11/12"	28/30cm	11/12"	28/30cm
Ⓟ 12 x 14"	30 x 36cm	FCD-1214	11/12"	28/30cm	13/14"	33/36cm
Ⓟ 12 x 16"	30 x 41cm	FCD-1216	11/12"	28/30cm	15/16"	38/41cm
	14 x 14"	FCD-1414	13/14"	33/36cm	13/14"	33/36cm
	14 x 16"	FCD-1416	13/14"	33/36cm	15/16"	38/41cm
	15 x 15"	FCD-1515	14/15"	36/38cm	14/15"	36/38cm
	15 x 17"	FCD-1517	14/15"	36/38cm	16/17"	41/43cm
	16 x 16"	FCD-1616	15/16"	38/41cm	15/16"	38/41cm
	16 x 18"	FCD-1618	15/16"	38/41cm	17/18"	43/46cm
	16 x 20"	FCD-1620	15/16"	38/41cm	19/20"	48/51cm
	17 x 17"	FCD-1717	16/17"	41/43cm	16/17"	41/43cm
	18 x 16"	FCD-1816	17/18"	43/46cm	15/16"	38/41cm
	18 x 18"	FCD-1818	17/18"	43/46cm	17/18"	43/46cm
	18 x 20"	FCD-1820	17/18"	43/46cm	19/20"	48/51cm
	20 x 16"	FCD-2016	19/20"	48/51cm	15/16"	38/41cm
	20 x 18"	FCD-2018	19/20"	48/51cm	17/18"	43/46cm
	20 x 20"	FCD-2020	19/20"	48/51cm	19/20"	48/51cm

Ⓟ This size features pediatric cushion contour.

**Don't forget  
a back support!**



The Forward Cushion works best when paired with a Ride Java® Back. The Java Back's patented biomechanical design provides flexibility to accurately fit the trunk and pelvis for superior support, comfort, and mobility.

### Ride CAM® Wedge Kit for Forward Cushion (FCD-WK)

Available for every cushion size.



Use CAM Wedges **symmetrically** to promote more upright posture and decrease ischial pressure.



Use CAM Wedges **asymmetrically** to help level a flexible pelvic obliquity.

▶ Note: For people at higher risk for skin breakdown, and/or more challenging postural control needs, consider the **Ride Java® Cushion and Back** or the **Ride Custom 2 Cushion and Custom Back**, the ultimate in postural support and skin care.



**Ride Designs®**  
a branch of Aspen Seating, LLC

phone: 303.781.1633  
toll-free: 866.781.1633  
www.ridedesigns.com

Patents: [www.ridedesigns.com/patents](http://www.ridedesigns.com/patents)  
© 2020, Ride Designs. 090-033-F